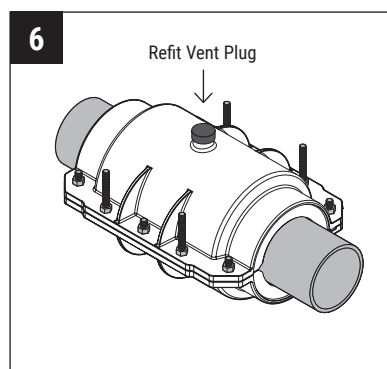
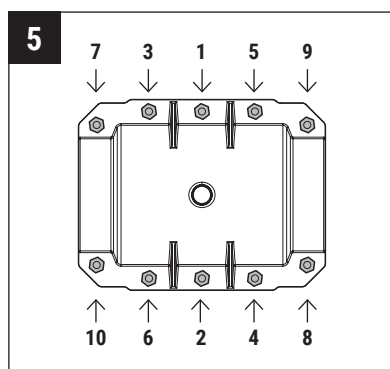
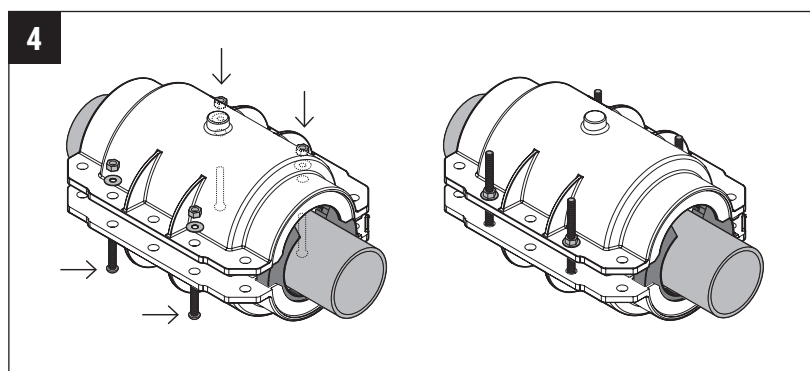
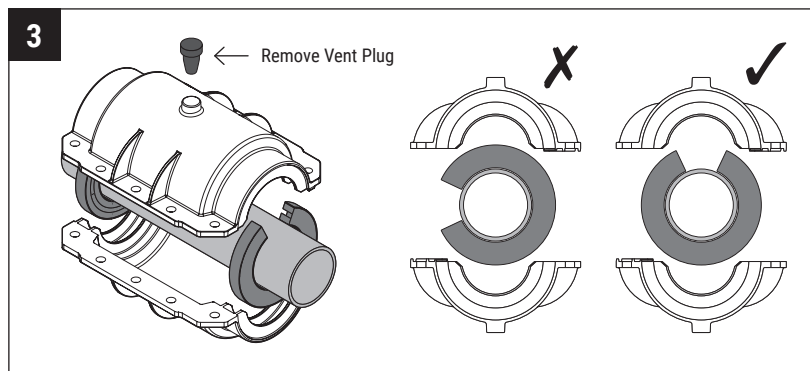
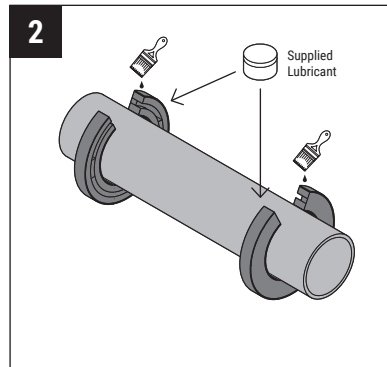
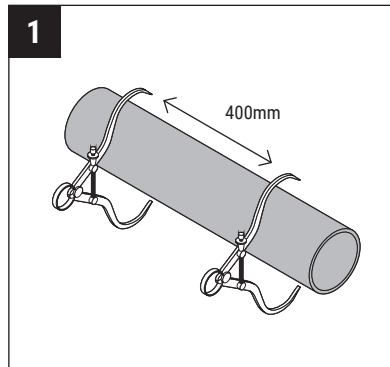


R2M cQUICK²

INSTALLATION & ASSEMBLY INSTRUCTIONS



INSTALLATION

Before starting, clean the working area of the pipe. Remove any loose scale, grind out deep scratches and spray the inside of the fitting with chlorus to ensure a smooth and clean installation.

- 1.) Measure the actual diameter of the pipe where the seals will land. Check that the diameter lies within the given range of the cQuick².
- 2.) Thoroughly lubricate all surfaces of the rubber seals with the lubricant provided, then fit the seals on to the pipe with the grooves facing inwards as shown. Ensure that the openings are at the top or bottom of the pipe, not to the side.
- 3.) Remove the vent plug* from the top. Fit the two halves of the cQuick² housing, ensuring that the rubber seals are fully inside their seating groove and in the correct orientation. Then push the top half of the housing down until secure.
- 4.) Fasten the top and bottom housing components with the four long bolts, washers and nuts as shown.
- 5.) Add the remaining bolts and tighten in the order shown. Pull sides together evenly and in stages. Torque to 120 - 150Nm.
- 6.) Refit the vent plug* or turn off the ferrule to complete the installation.

** In cases where the leak is severe a 1/2" ferrule may be used to vent the pressure whilst installing the clamp.*

For more information contact R2M Limited. Call on 01282 778030, or visit our website www.r2mltd.co.uk